

Supplementary Information for:

New Empirical Models for Estimating Permeability in One of Southern Iranian Carbonate Fields using NMR-Derived Features

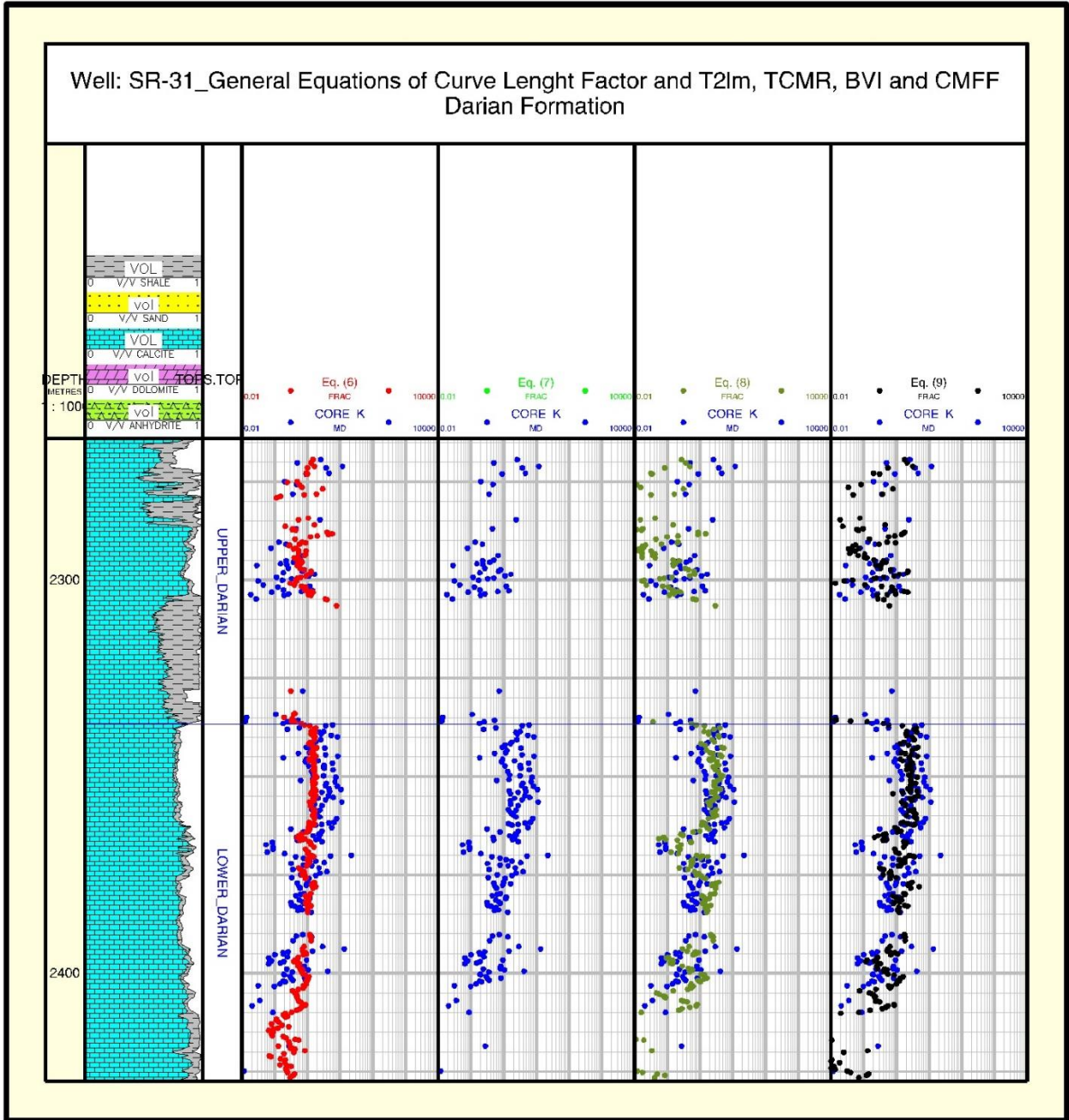


Fig. S1. Pore-related model predictions vs. core data in Darian formation

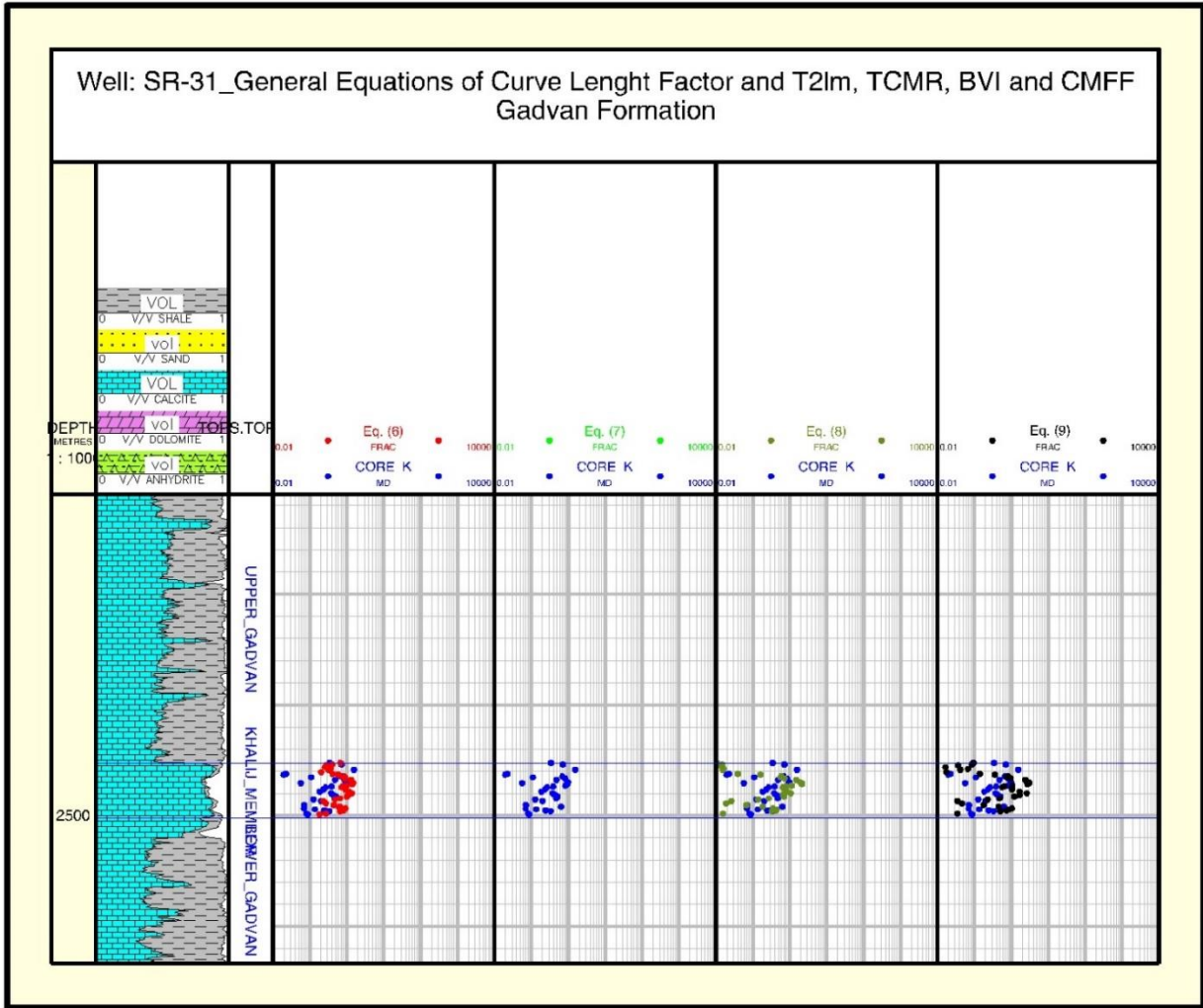


Fig. S2. Pore-related model predictions vs. core data in Gadvan formation

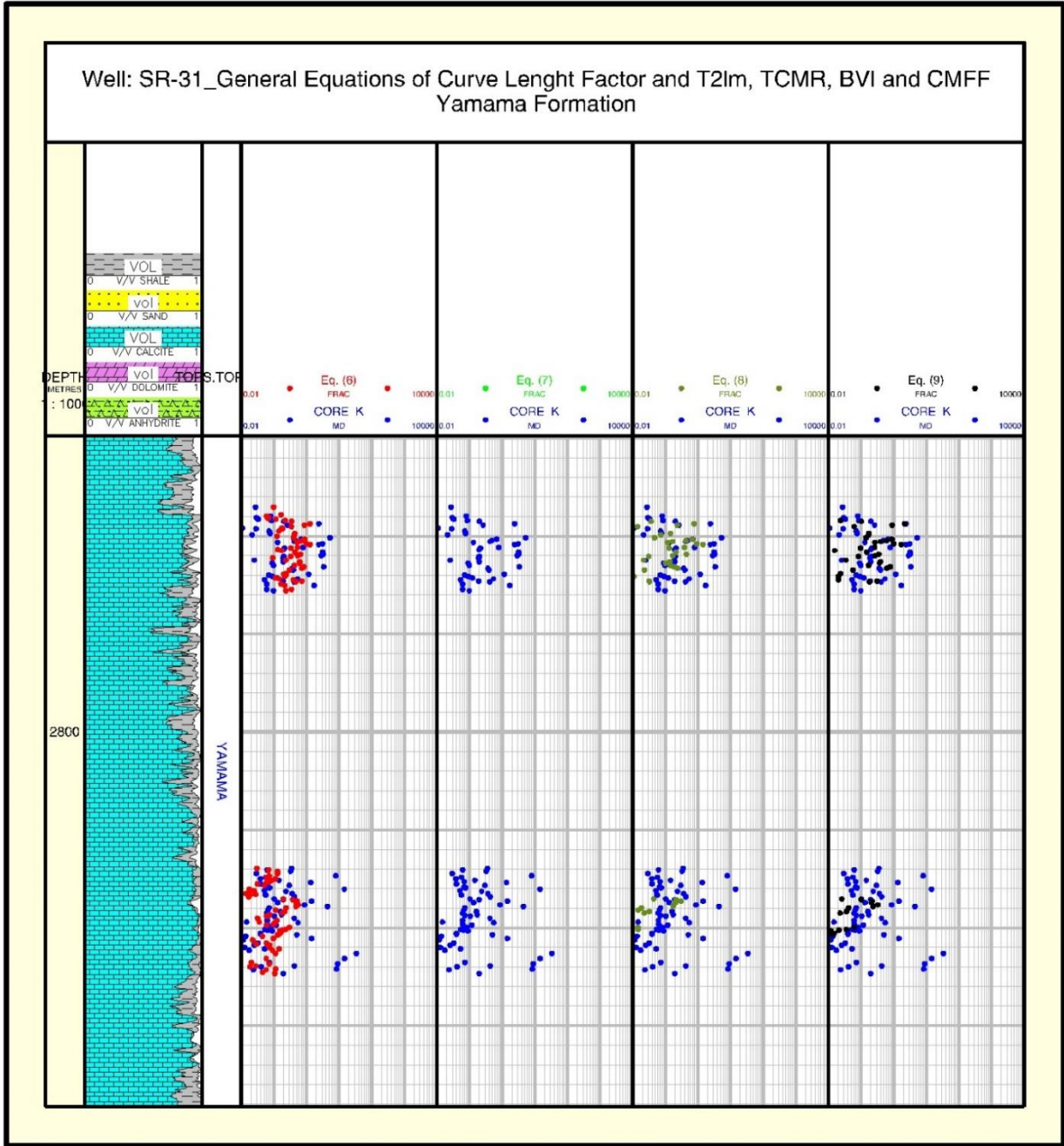


Fig. S3. Pore-related model predictions vs. core data in Yamama formation

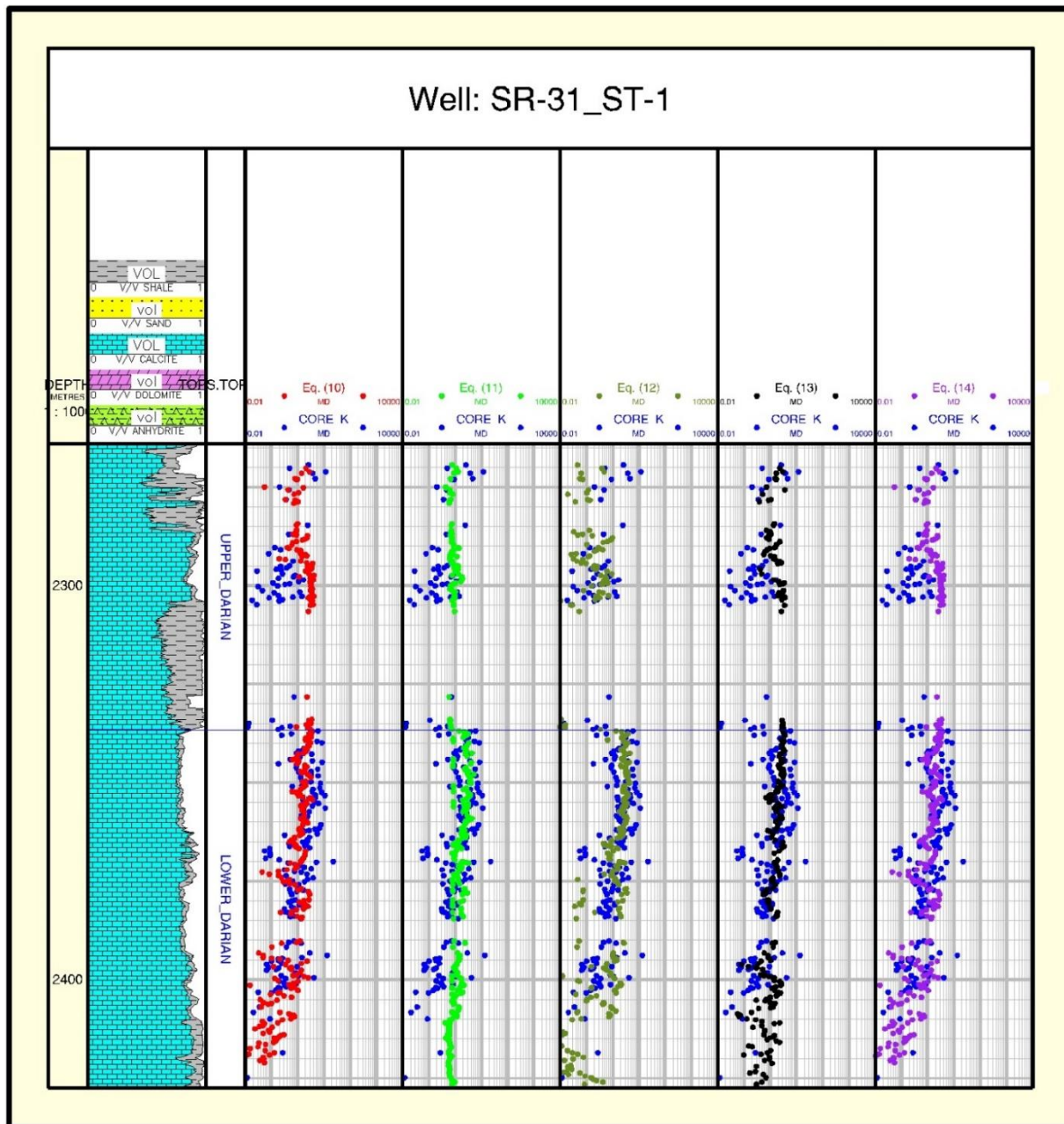


Fig. S4. Geometric model predictions vs. core data in Darian formation

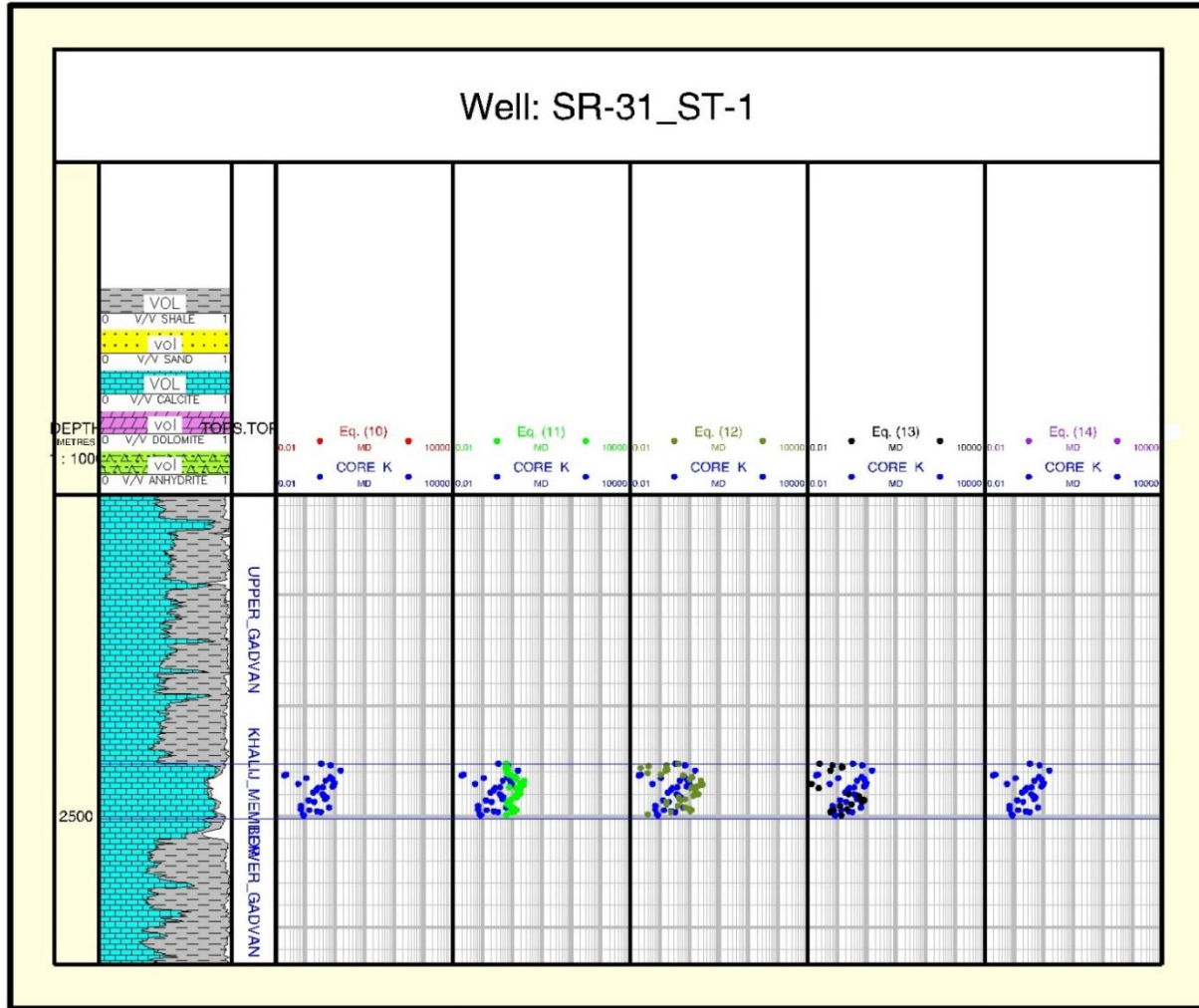


Fig. S5. Geometric model predictions vs. core data in Gadvan formation

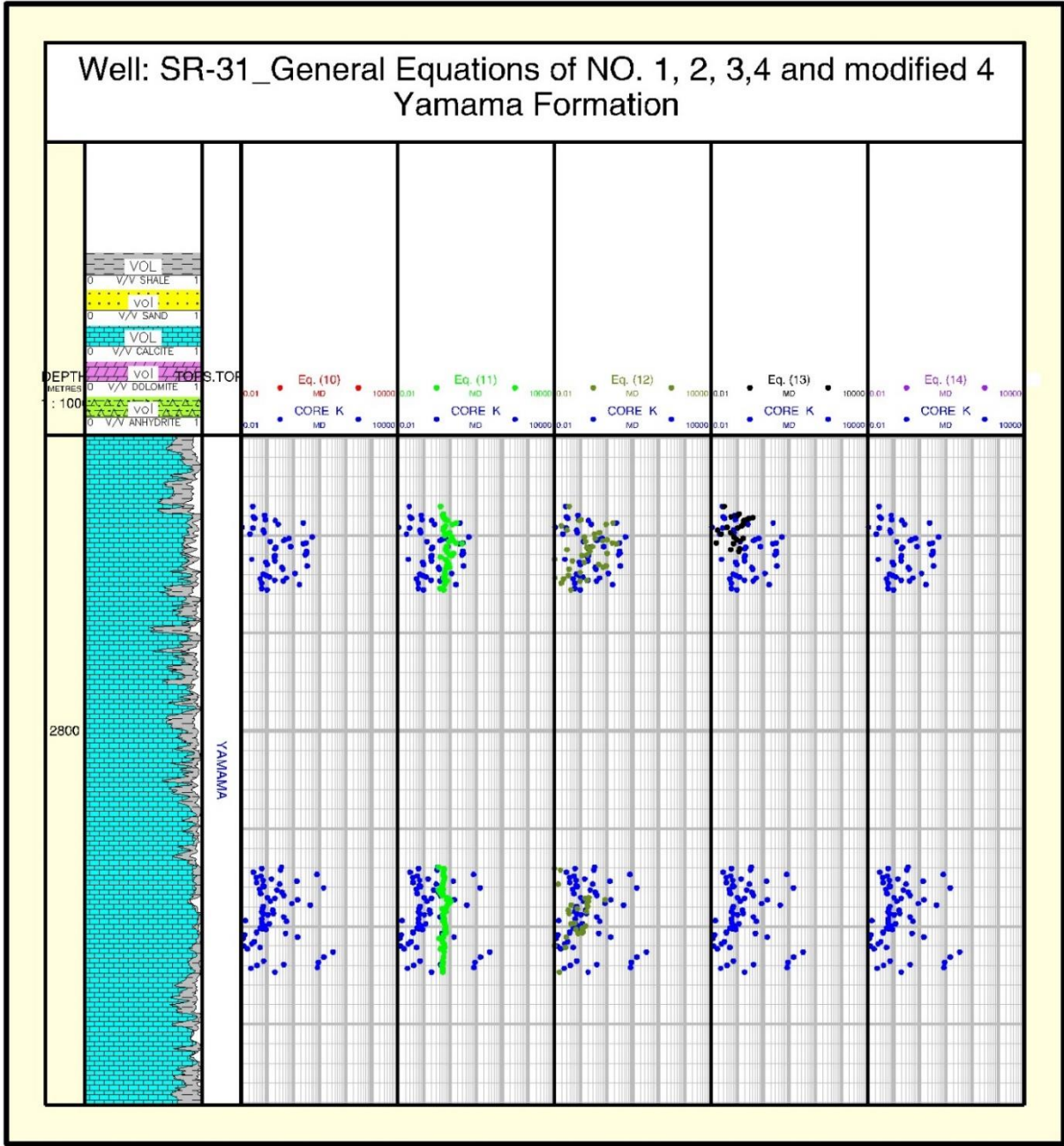


Fig. S6. Geometric model predictions vs. core data in Yamama formation